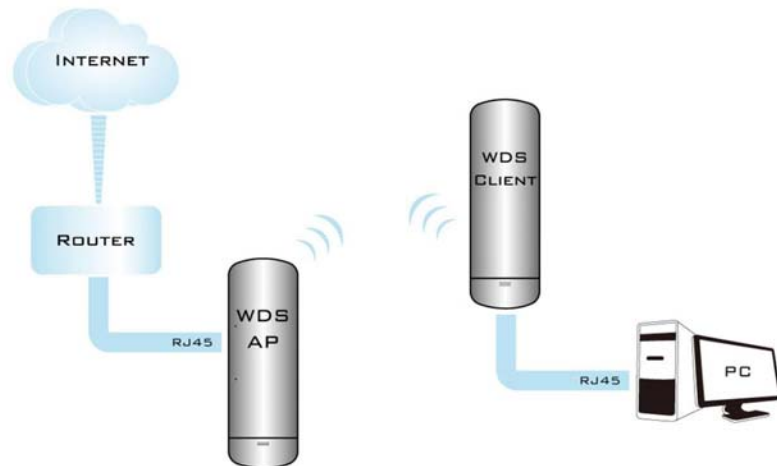


## Establish Point to Point Connection

Apply Model: MT-WA900N



### Hardware Setup –

#### Setup Procedure -

Setup your FIRST UNIT as a WDS Access Point

AP Bridge Mode, WDS Access Point Mode, IP address 192.168.2.1

Open your browser and enter configuration IP address

User Name

Password

Login

<http://192.168.2.1>

Enter admin/admin for user name and

User Name

Password

Login

password.

Now, it shows the status of your unit

Status	Easy Setup	Advanced	Language English
<b>Internet Configuration</b>			
Connected Type <b>DHCP</b>		Connected Status	
WAN IP Address		Subnet Mask	
Default Gateway		Primary Domain Name Server	
Secondary Domain Name Server		MAC Address <b>00:C0:CA:60:AF:79</b>	
<b>LAN Configuration</b>			
LAN IP Address <b>192.168.2.1</b>		LAN Netmask <b>255.255.255.0</b>	
MAC Address <b>00:C0:CA:60:AF:78</b>			
<b>System Info</b>			
Firmware Version <b>V2.4 2012-05-25-16:33</b>		System Time <b>Sun, 01 Jan 2012 12:09:30</b>	
Operation Mode <b>AP Router mode</b>		Wireless MAC Address <b>00:C0:CA:60:AF:7A</b>	

Click on **Advanced** and select **Operation Mode**

Status	Easy Setup	Advanced	Language English
<b>Internet Configuration</b>			
Connected Type <b>DHCP</b>		Connected Status	
WAN IP Address		Subnet Mask	
Default Gateway		Primary Domain Name Server	
Secondary Domain Name Server		MAC Address <b>00:C0:CA:60:AF:79</b>	
<b>LAN Configuration</b>			
LAN IP Address <b>192.168.2.1</b>		LAN Netmask <b>255.0</b>	
MAC Address <b>00:C0:CA:60:AF:78</b>			
<b>System Info</b>			
Firmware Version <b>V2.4 2012-05-25-16:33</b>		System Time <b>Jan 2012 12:09:55</b>	
Operation Mode <b>AP Router mode</b>		Wireless MAC Address <b>00:C0:CA:60:AF:7A</b>	

Management

Advanced Settings

**Operation Mode**

System Log

Tools

Firewall Settings

MAC/IP/Port Filtering

Virtual Server

DMZ

Firewall

QoS

Content Filtering

Network Settings

WAN

LAN

VLAN

DHCP Static Leases

Advanced Routing

Wireless Settings

Basic

Advanced

Access Control

Choose the **AP Bridge** from the drop down menu and press **Apply** button when finished.

Status	Easy Setup	Advanced	Language English
<b>Operation Mode Configuration</b>			
Operation Mode		AP Router	
		AP Router	
		<b>AP Bridge</b>	
		Client Router	
		Client Bridge	
Apply			

Your unit will reboot and save your current settings.

**The device will reboot automatically, please wait 44 seconds**

After rebooting, your browser will show you the status of your unit in AP Bridge Mode as shown below.

Status	Easy Setup	Advanced	Language English
<u>LAN Configuration</u>			
LAN IP Address 192.168.2.1		LAN Netmask 255.255.255.0	
MAC Address 00:C0:CA:60:AF:78			
<u>System Info</u>			
Firmware Version V2.4 2012-05-25-16:33		System Time Sun, 01 Jan 2012 12:02:17	
Operation Mode AP Bridge mode		Wireless MAC Address 00:C0:CA:60:AF:7A	

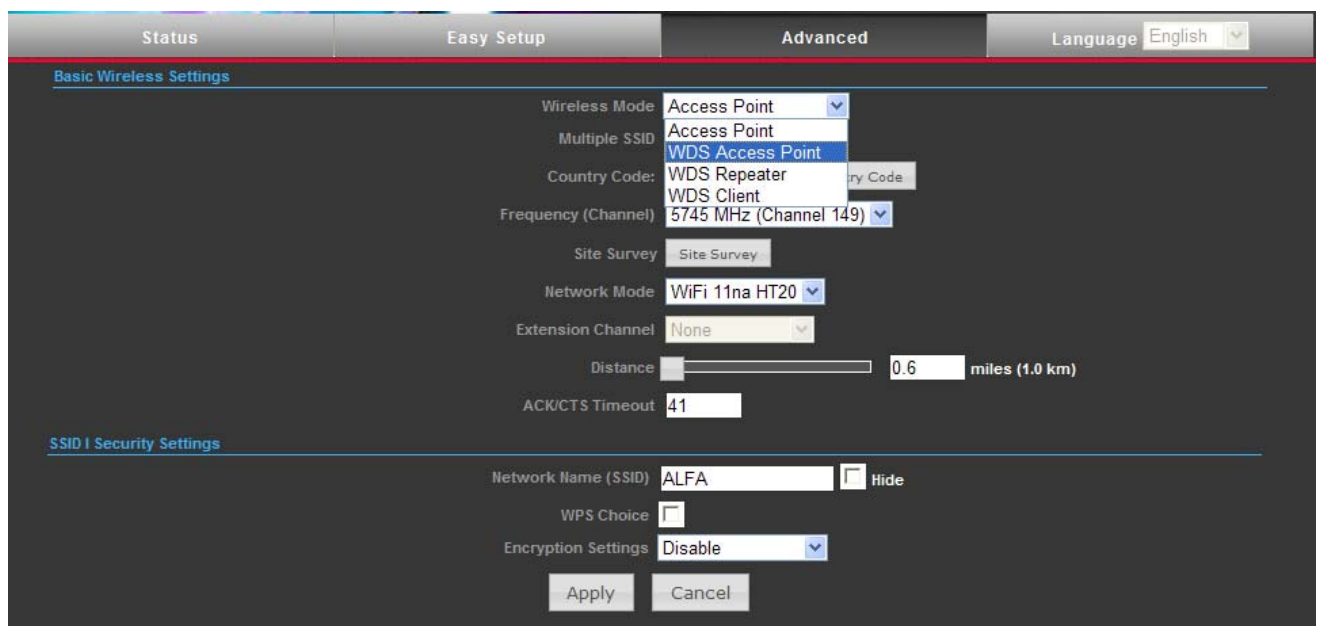
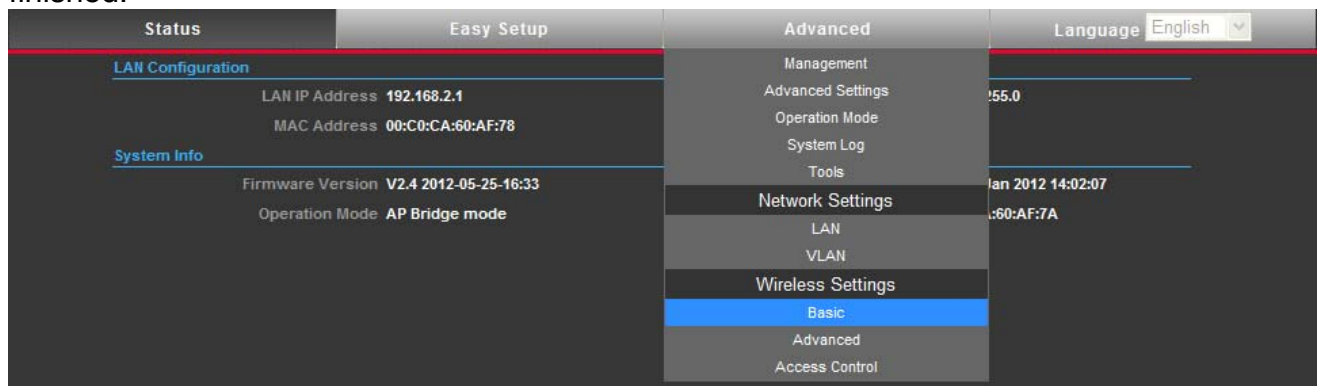
Make sure your DHCP server is disabled.  
Select **Advanced** >> **Network Setting** >> **LAN**

Status	Easy Setup	Advanced	Language English
<u>LAN Configuration</u>		Management	
LAN IP Address 192.168.2.1		Advanced Settings	255.0
MAC Address 00:C0:CA:60:AF:78		Operation Mode	
<u>System Info</u>		System Log	
Firmware Version V2.4 2012-05-25-16:33		Tools	Jan 2012 14:07:07
Operation Mode AP Bridge mode		Network Settings	60:AF:7A
		LAN	
		VLAN	
		Wireless Settings	
		Basic	
		Advanced	
		Access Control	

Status	Easy Setup	Advanced	Language English
<u>LAN Setup</u>			
MAC Address 00:C0:CA:60:AF:78			
IP Address 192.168.2.1			
Subnet Mask 255.255.255.0			
Default Gateway			
Primary DNS Server			
Secondary DNS Server			
<u>DHCP Setup</u>			
DHCP Server Disable			
Apply Cancel			

Enable WDS Access Point mode for your first unit.

Select the **Advanced** >> **Wireless Settings** >> **Basic** use drop down menu to select **WDS Access Point** from **Wireless Mode** and press **Apply** button when finished.

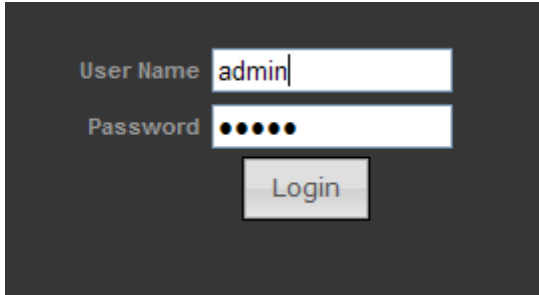


\*\*\*\*\*

Setup your SECOND UNIT as a WDS CLIENT OR WDS REPEATER

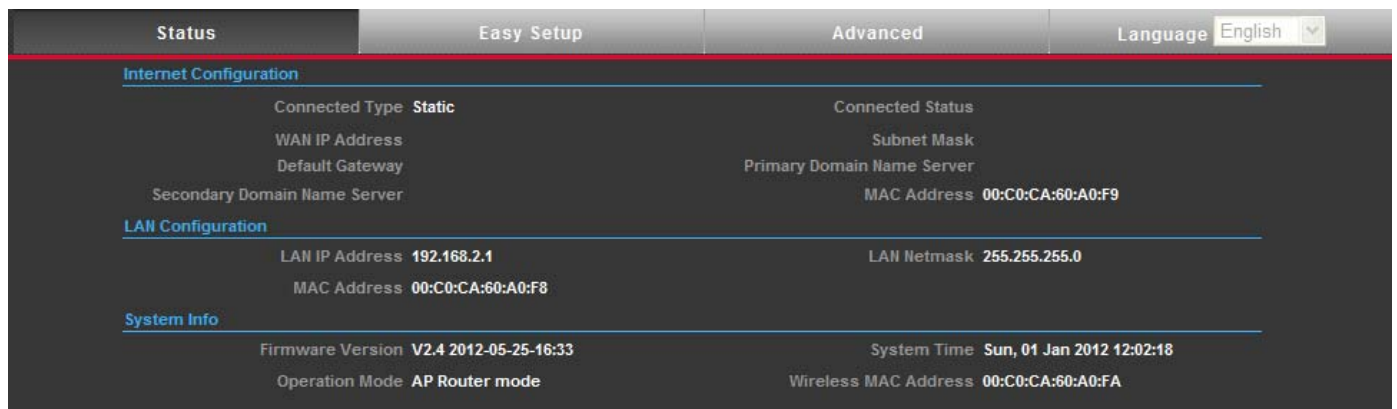
AP Bridge Mode, WDS Client Mode, IP address 192.168.3.1

Open your browser and enter configuration IP address <http://192.168.2.1> and enter admin/admin for both user name & password when prompted.



A login form with a dark background. It contains two input fields: 'User Name' with the text 'admin' entered, and 'Password' with five dots representing masked characters. Below the password field is a 'Login' button.

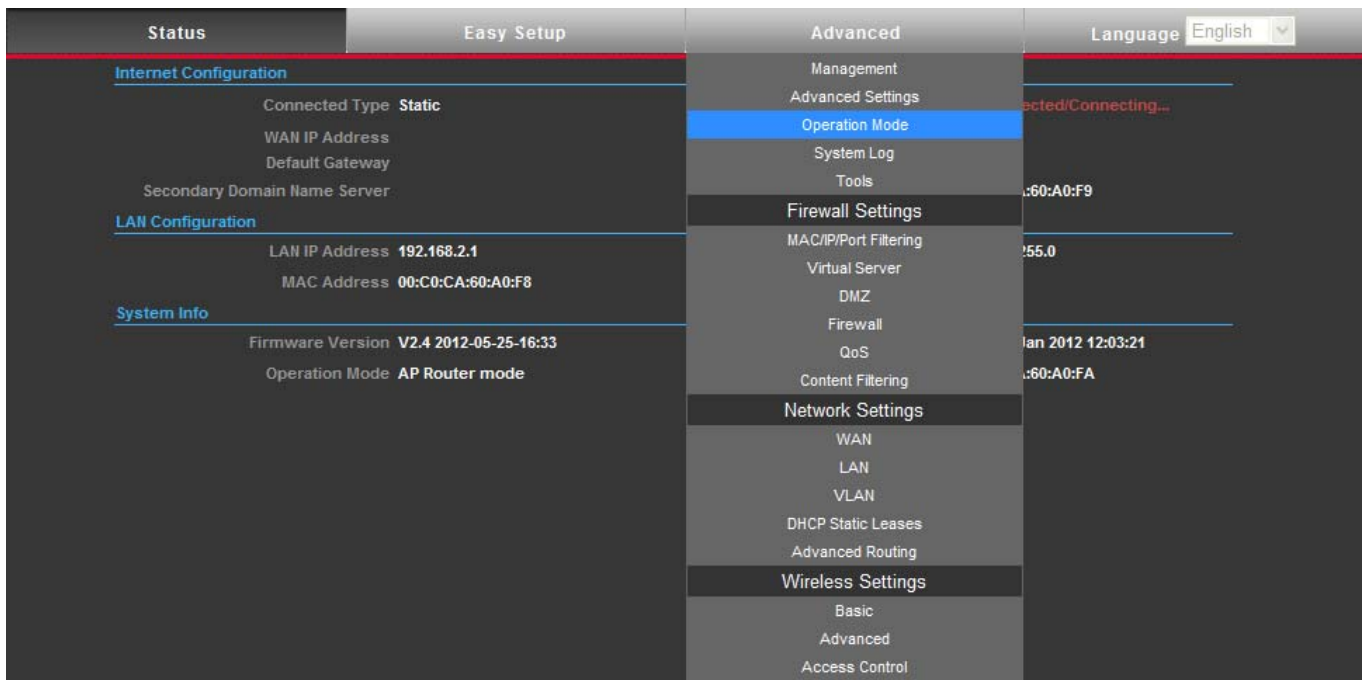
Status page showing your 2<sup>nd</sup> unit in AP Router mode (default setting)



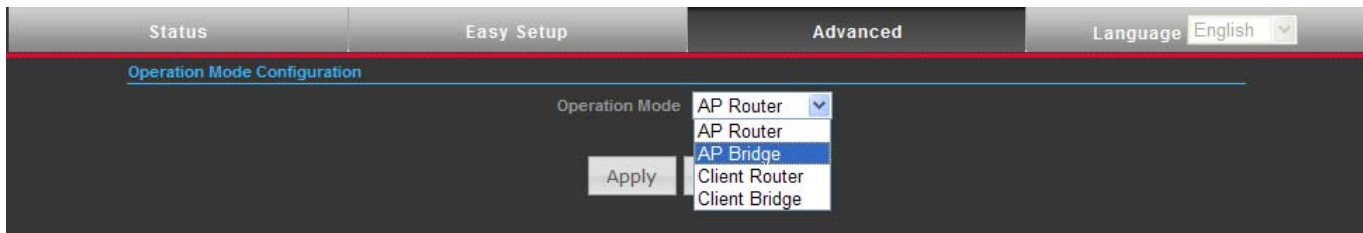
The status page of a router with a dark theme. It features a top navigation bar with tabs: 'Status' (selected), 'Easy Setup', 'Advanced', and 'Language' (set to 'English'). The main content area is divided into three sections: 'Internet Configuration', 'LAN Configuration', and 'System Info'. Each section contains various status parameters and their values.

Section	Parameter	Value
Internet Configuration	Connected Type	Static
	Connected Status	
	WAN IP Address	
	Subnet Mask	
	Default Gateway	
LAN Configuration	Primary Domain Name Server	
	Secondary Domain Name Server	
	MAC Address	00:C0:CA:60:A0:F9
System Info	LAN IP Address	192.168.2.1
	LAN Netmask	255.255.255.0
	MAC Address	00:C0:CA:60:A0:F8
	Firmware Version	V2.4 2012-05-25-16:33
	System Time	Sun, 01 Jan 2012 12:02:18
	Operation Mode	AP Router mode
	Wireless MAC Address	00:C0:CA:60:A0:FA

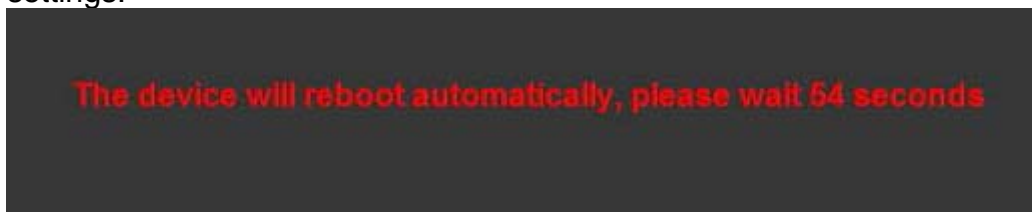
Select **Advanced** >> **Operation Mode**



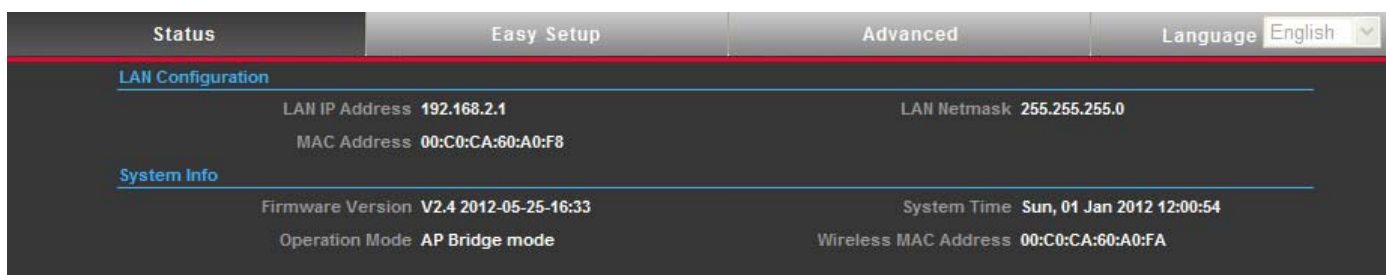
Choose **AP Bridge** from the drop down menu and click **Apply** when finished.



Your unit will reboot and save your current settings.

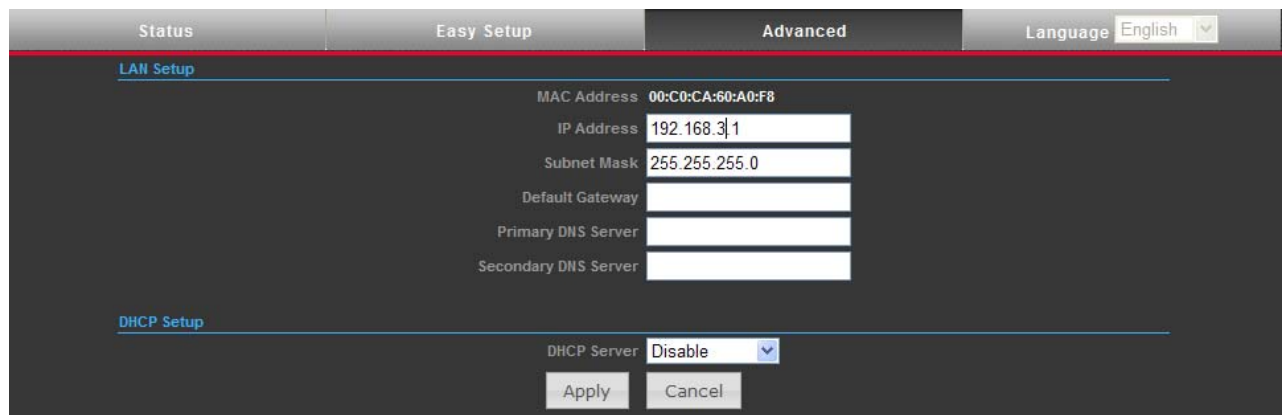
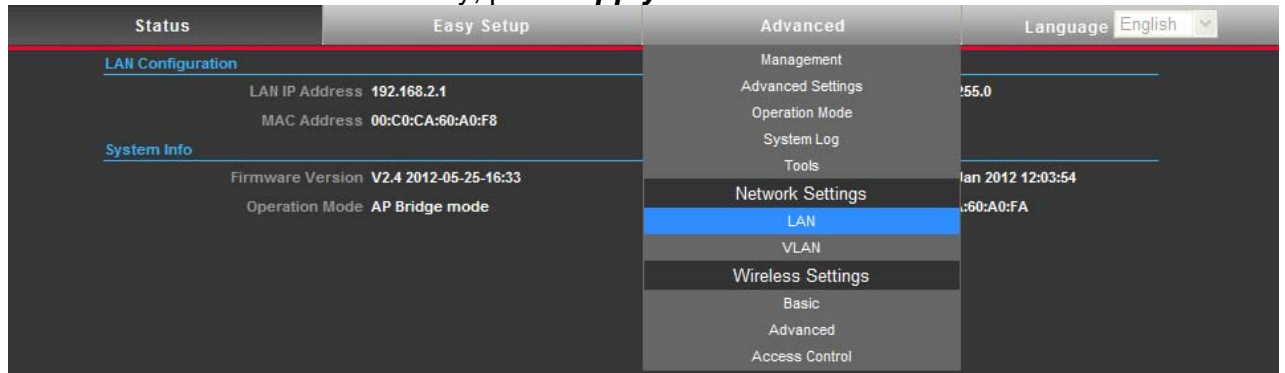


After rebooting, your browser will show you the status of your unit in AP Bridge Mode as shown below.



Now, we need to change IP address for the unit to 192.168.3.1 and make sure DHCP is disabled.

Select **Advanced** >> **Network Settings** >> **LAN** and change the IP address from 192.168.2.1 to 192.168.3.1. Lastly, press **Apply** button when finished.



Open your browser and enter configuration IP address <http://192.168.3.1> and enter admin/admin for both user name & password when prompted

User Name

Password

Your browser will show you the status of your unit in AP Bridge Mode as shown below.

Status	Easy Setup	Advanced	Language <span>English</span>
<b>LAN Configuration</b>			
LAN IP Address <b>192.168.3.1</b>		LAN Netmask <b>255.255.255.0</b>	
MAC Address <b>00:C0:CA:60:A0:F8</b>			
<b>System Info</b>			
Firmware Version <b>V2.4 2012-05-25-16:33</b>		System Time <b>Sun, 01 Jan 2012 12:01:59</b>	
Operation Mode <b>AP Bridge mode</b>		Wireless MAC Address <b>00:C0:CA:60:A0:FA</b>	

Enable WDS Client mode for your second unit.

Select the **Advanced** >> **Wireless Settings** >> **Basic** use drop down menu to select **WDS Client** from **Wireless Mode** and press **Apply** button when finished.

Status	Easy Setup	Advanced	Language <span>English</span>
<b>LAN Configuration</b>			
LAN IP Address <b>192.168.3.1</b>		LAN Netmask <b>255.0</b>	
MAC Address <b>00:C0:CA:60:A0:F8</b>			
<b>System Info</b>			
Firmware Version <b>V2.4 2012-05-25-16:33</b>		System Time <b>Jan 2012 12:02:37</b>	
Operation Mode <b>AP Bridge mode</b>		Wireless MAC Address <b>00:C0:CA:60:A0:FA</b>	

Management  
Advanced Settings  
Operation Mode  
System Log  
Tools  
**Network Settings**  
LAN  
VLAN  
**Wireless Settings**  
Basic  
Advanced  
Access Control

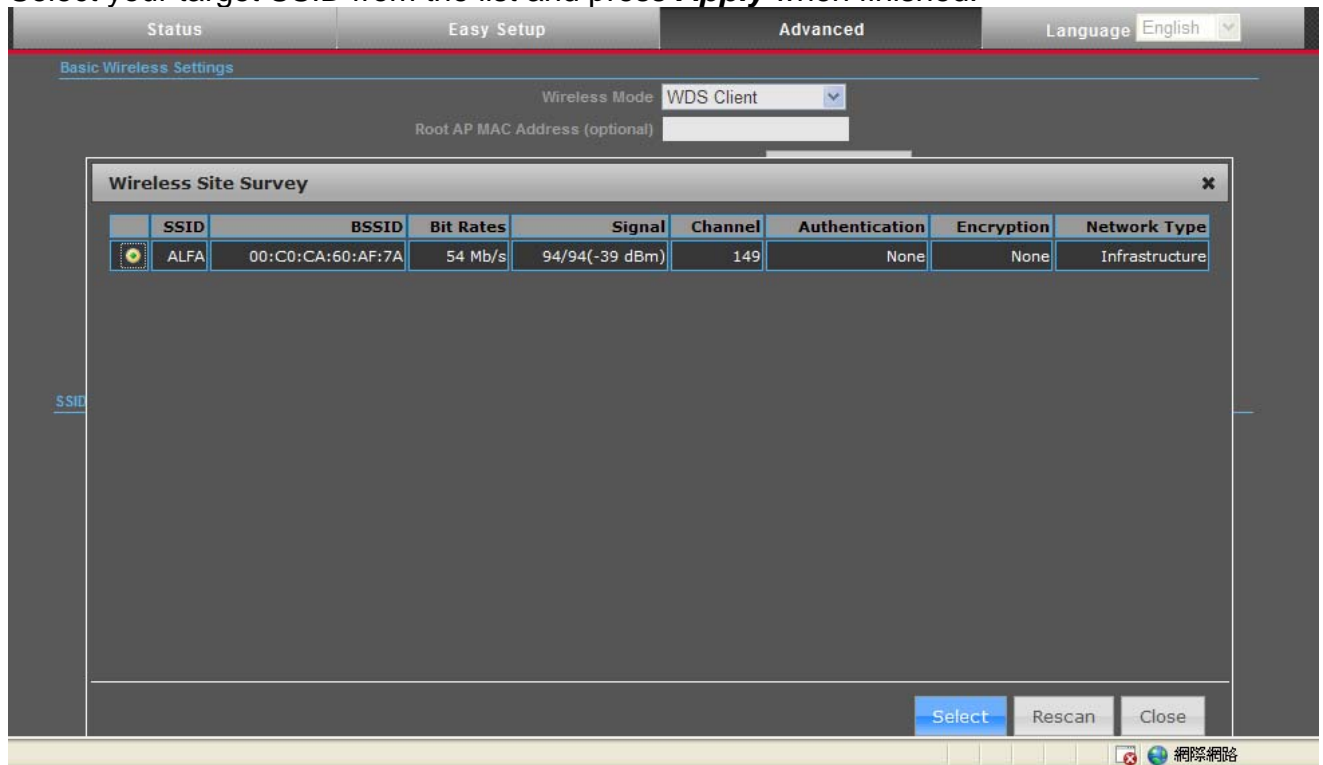


Status	Easy Setup	Advanced	Language English
<b>Basic Wireless Settings</b>			
Wireless Mode	Access Point		
Multiple SSID	Access Point		
Country Code:	WDS Access Point		
Frequency (Channel)	WDS Repeater		
Site Survey	WDS Client		
Network Mode	5745 MHz (Channel 149)		
Extension Channel	None		
Distance	0.6 miles (1.0 km)		
ACK/CTS Timeout	41		
<b>SSID I Security Settings</b>			
Network Name (SSID)	ALFA		
WPS Choice	<input type="checkbox"/>		
Encryption Settings	Disable		
<input type="button" value="Apply"/> <input type="button" value="Cancel"/>			

Press Scan button to find your target SSID that you setup for your 1<sup>st</sup> unit.

Status	Easy Setup	Advanced	Language English
<b>Basic Wireless Settings</b>			
Wireless Mode	WDS Client		
Root AP MAC Address (optional)			
Country Code:	United States		
Frequency (Channel)	5745 MHz (Channel 149)		
Network Mode	WiFi 11na HT20		
Extension Channel	None		
Distance	0.6 miles (1.0 km)		
ACK/CTS Timeout	41		
<b>SSID I Security Settings</b>			
Root AP SSID	ALFA		
Encryption Settings	Disable		
<input type="button" value="Apply"/> <input type="button" value="Cancel"/> <input type="button" value="Scan"/>			

Select your target SSID from the list and press **Apply** when finished.

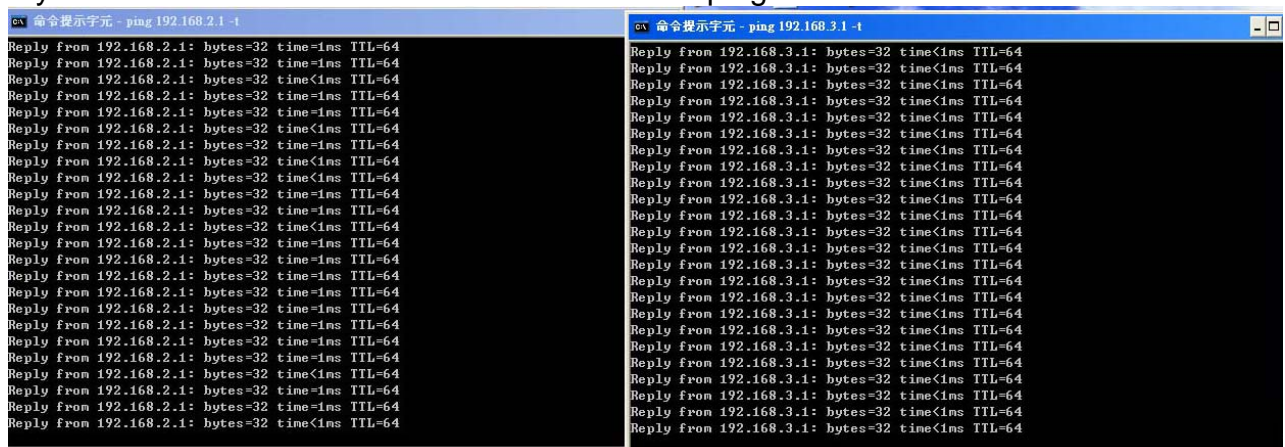


**NOTE: IF you want repeater then select WDS Repeater**

\*\*\*\*\*

### Verification -

My PC is connected to 2<sup>nd</sup> Atheros unit so able to ping both 1<sup>st</sup> and 2<sup>nd</sup> Atheros unit



Another PC is connecting to 1<sup>st</sup> Atheros unit and received IP address from the Router and able to ping Google and open [www.yahoo.com](http://www.yahoo.com) web

page

